

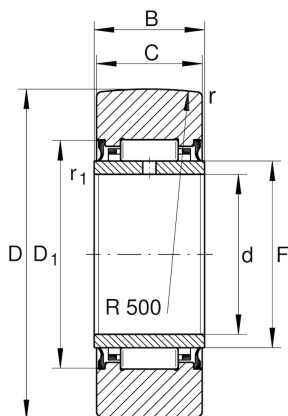
## NA2202-2RSR

Yoke type track roller

Schaeffler ID:  
0000276340000

Yoke type track rollers NA22...-2RSR,  
without axial guidance, lip seals on both  
sides

### Technical information



#### Main Dimensions & Performance Data

|             |             |                                       |
|-------------|-------------|---------------------------------------|
| D           | 35 mm       | Outside diameter                      |
| F           | 20 mm       | Raceway diameter inner ring           |
| C           | 13.8 mm     | Width, outer ring                     |
| $C_{r w}$   | 7,600 N     | Basic dynamic load rating, radial     |
| $C_{0 r w}$ | 9,900 N     | Basic static load rating, radial      |
| $C_{u r w}$ | 1,390 N     | Fatigue load limit, radial            |
| $n_{D G}$   | 3,400 1/min | Speed on permanent grease lubrication |
|             | 75 g        | Weight                                |

#### Dimensions

|              |        |                                      |
|--------------|--------|--------------------------------------|
| d            | 15 mm  | Bore diameter                        |
| B            | 14 mm  | Width, inner ring                    |
| $D_{1 \min}$ | 26 mm  | Minimum mounting dimension           |
| $r_{\min}$   | 0.6 mm | Minimum chamfer dimension            |
| $r_{1 \min}$ | 0.3 mm | Minimum chamfer dimension            |
| R            | 500 mm | Radius of outer ring outside profile |